



Medicine Hat  
Catholic Schools  
*Showing the  
Face of  
Christ to All*

**FIRST DAY  
OF CLASS**  
SEPT. 4, 2018  
(GRADES 1-12)  
FIRST DAY OF KINDERGARTEN  
& EARLY LEARNING  
SEPT. 7, 2018  
(with orientation days  
Sept. 4, 5 & 6)

[www.mhcbe.ab.ca](http://www.mhcbe.ab.ca)  
**403.527.2292**



Find us @mhcatholic



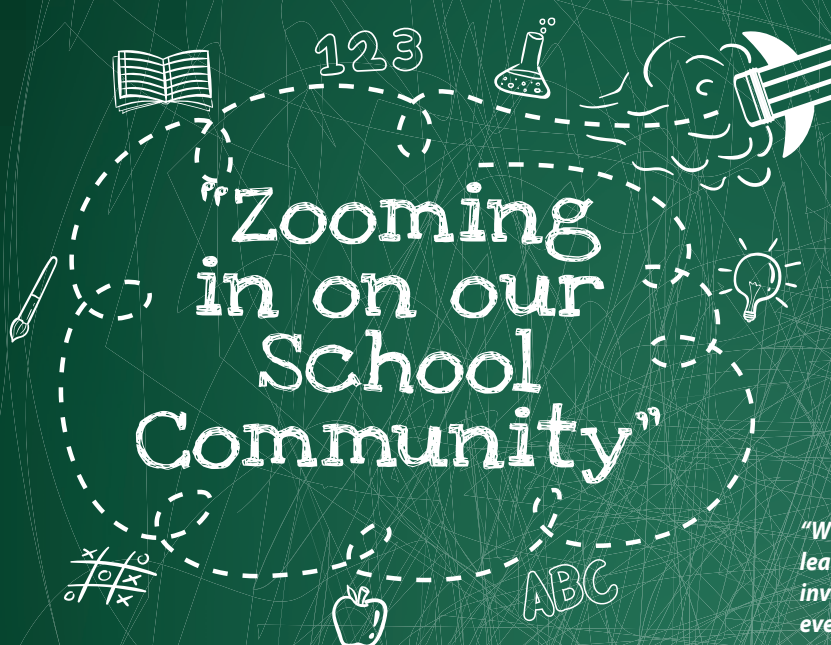
Medicine Hat Catholic  
Board of Education

Our schools offer a faith-filled education.  
We nourish the whole child spiritually, socially and academically. All are welcome.

MEDICINE HAT CATHOLIC BOARD OF EDUCATION

**2018-2019 SCHOOL YEAR**

A guide for students and parents



*Thank you for supporting  
Medicine Hat  
Catholic Schools!*

**Engaging Students...  
the key to learning**

*"When students feel empowered and engaged in their learning, success occurs. It is through this meaningful involvement that we witness the passion and curiosity in every child. In Medicine Hat Catholic Schools our goal is to foster that wonder."*

—Joe Colistro, Superintendent of Schools

## Table of Contents

Contact Us.....	2
Our Mission.....	3
<b>OUR SCHOOLS:</b>	
<b>HIGH SCHOOL:</b>	
Monsignor McCoy High School.....	4
<b>MIDDLE SCHOOLS:</b>	
Notre Dame Academy.....	5
St. Mary's School.....	6
<b>ELEMENTARY SCHOOLS:</b>	
Mother Teresa School.....	7
St. Francis Xavier School.....	8
St. Louis School.....	9
St. Michael's School.....	10
St. Patrick's School.....	11
École St. John Paul II School.....	12
Transportation, Schools, Boundaries, Bell Times.....	13
Learning Services, ESL, FNMI.....	14-15
Kindergarten and Early Learning Programs.....	16
Catholic Schools' Education Foundation.....	17
Social Media.....	18-19
School Year Calendar.....	20

### SENIOR ADMINISTRATION

- MR. JOE COLISTRO  
Superintendent of Schools..... 403.502.8347
- MR. CHUCK HELLMAN  
Associate Superintendent Human Resources ..... 403.502.8352
- MR. HUGH LEHR  
Associate Superintendent Learning Services ..... 403.502.8361
- MR. GREG MACPHERSON  
Secretary-Treasurer ..... 403.502.8360
- MRS. TERRI BALL  
Co-ordinator Early Childhood Services..... 403.502.8354
- MRS. SANDRA RICHARD  
Religious Education Co-ordinator..... 403.502.8353

### BOARD OF TRUSTEES

- Mr. Dick Mastel, Board Chair ..... 403.527.2292
- Reverend Mr. Robert Risling, Vice Chair
- Mr. Peter Grad, Trustee
- Mrs. Kathy Glasgo, Trustee
- Mr. David Leahy, Trustee

**Are you new to Canada,  
new to our city, transferring  
from another school or a new  
learner getting ready to start  
school for the first time?**

*Catholic Schools are a publicly funded, vibrant part of the  
public education system in Alberta.  
There is no tuition to attend a Catholic School in Alberta.  
Come Experience Catholic Schools.  
ALL ARE WELCOME! BIENVENUE!*



**MR. DICK MASTEL**  
Board Chair

**REVEREND MR. ROBERT RISLING**  
Vice-Chair

**MR. PETER GRAD**  
Trustee

**MRS. KATHY GLASGO**  
Trustee

**MR. DAVID LEAHY**  
Trustee





St. Patrick's Parish,  
Medicine Hat

Holy Family Parish,  
Medicine Hat

*Our schools are a welcoming, caring, respectful, safe, Catholic learning environment that respect diversity and nurture a sense of belonging.*

**This Guide for Students and Parents is our first step to enhance communication between home and the school.**

Please keep this publication as a handy reference throughout the year. It contains information about your child's school, services and programs.

It also features key dates in the school year calendar, school holidays, transportation and attendance areas and school bell times.

Parents are important partners in education, so we invite you to get involved in your child's school. There are many opportunities for parents to contribute, including volunteering and membership on School Councils.

**See inside for details!**

For news throughout the school year, visit our website @ [www.mhcbe.ab.ca](http://www.mhcbe.ab.ca) and find us on social media.

**Have a great school year!**

**Come Experience Catholic Schools!**



**Medicine Hat Catholic Schools warmly welcome all students to enrol in any one of our 9 Catholic Schools.**

## Our Philosophy

**OUR MISSION:**

In partnership with family, church and community we provide catholic education of the highest quality to our students.

*We value our church partnerships that provide unique experiences for students.*

**OUR VISION:**

We are a gospel-centred community committed to Learning Excellence, Christian Service and Living Christ.

**OUR MOTTO:**

"Showing the Face of Christ to All."

Contact us:



Website.....[www.mhcbe.ab.ca](http://www.mhcbe.ab.ca)  
 Catholic School Board Office (all inquiries) .....403.527.2292  
 Email .....[communications@mhcbe.ab.ca](mailto:communications@mhcbe.ab.ca)



# Monsignor McCoy High School

Simply the Best - Nothing Less... providing the highest quality education with strong Christian values by dedicated professionals in partnership with family, Church and community.

**GRADES 10 - 12**

202 8th Street NE Medicine Hat, AB. T1A 5R6  
tel: (403) 527-8161 • fax: (403) 527-8209

Monsignor McCoy High School  
 @MMcCoy\_MH

**Principal** Mr. Paul Bauche paul.bauche@mhcbe.ab.ca  
**Vice Principal** Mr. Robert Burzminski robert.burzminski@mhcbe.ab.ca  
**Vice Principal** Mr. Pat Weisgerber pat.weisgerber@mhcbe.ab.ca

• All district attendance zones  
Bell times 8:10 a.m. • 2:40 p.m.

ACADEMICS, SPORTS,  
SOCIAL JUSTICE,  
CAREER  
& TECHNOLOGY,  
FINE ARTS!



Panterra Mexico



We Day



- French Immersion
- Advanced Placement - Calculus, English & Art
- Advanced Theatre Production
- Cosmetology
- Band, Choir, Drama, Art
- Registered Apprenticeship Program (RAP) & Work Experience
- Mechanics/Fabrication
- Sports Medicine & Competitive Cross Training
- Full complement of Physical Education and Athletics programming throughout the school year.

## Monsignor McCoy High School is part of Alberta's Moving Forward with High School Redesign Project.

As such, we are able to offer instruction focused entirely on student learning, and not on required minutes of instruction in each area of study. Therefore, a timetable has been developed offering 40-minute blocks of flex time each day where students can move throughout the building accessing teacher support.



We promote a strong academic culture for all students. We offer opportunities to increase your academics through **Advanced Placement**. Students can take post-secondary courses in Calculus, English & Art while they are still in high school creating numerous advantages for students when entering College or University. We offer **extensive Off-Campus Education** opportunities including **Work Experience, Registered Apprenticeship, Work Study, Career Internship, Workplace Readiness/Practicum, Green Certificate and the Production Field Operator Program**. Begin working, continue learning and earn valuable experience. Call and speak to one of our excellent school counsellors to set up your program.



**Principal** Mr. Neal Siedlecki [neal.siedlecki@mhcbe.ab.ca](mailto:neal.siedlecki@mhcbe.ab.ca)  
**Vice Principal** Mr. Lon Bosch [lon.bosch@mhcbe.ab.ca](mailto:lon.bosch@mhcbe.ab.ca)

# Notre Dame Academy

*Using Hands on Activities, Project Based Learning and Building Relationships with students to significantly impact their learning and promote school improvement.*

*Using the power and appeal of Sports to have a positive effect on our students and the community.*

**GRADES 6 - 9 REGULAR & SPORTS ACADEMY PROGRAMMING**

646 Spruce Way SE Medicine Hat, AB. T1B 4L4  
 tel: (403) 527-5118 • fax: (403) 527-6649

Notre Dame Academy  
 @NotreDame\_MH

• All students in South Ridge, Saamis Heights, Vista Heights and Hamptons.  
 All district attendance zones for Sports Academy.

**FLEX ZONE AREA** - All students living in Desert Blume may attend St. Mary's (Gr. 7-9) or Notre Dame (Gr. 6-9) with transportation provided.

Bell times 8:15 a.m. • 2:46 p.m.

## ACADEMIC *and* ATHLETIC EXCELLENCE TOGETHER...



Notre Dame Hockey

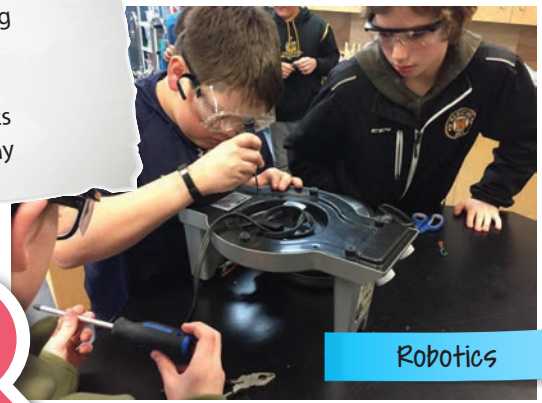
### Building Relationships with Each Other and Our Community

*We believe in working together to help those in need through service projects:*

- ✓ Santa's Little Helpers (Tree of Hope)
- ✓ Food Bank Hampers
- ✓ Terry Fox
- ✓ Snow Angels Shoveling Crew
- ✓ Christmas Store
- ✓ Women's Shelter
- ✓ Good Sam's visits
- ✓ Children's Wish Foundation
- ✓ Mission Mexico
- ✓ St. Vincent DePaul
- ✓ Child Sponsorship

### OPTIONS AT NOTRE DAME!

- CTS
- Foods Lab
- Leadership
- Rockets & Robotics
- Drama 7, 8, 9
- Art
- Money Management
- Fitness Training
- Woodworking
- Shop
- Plumbing
- Legorobotics
- Photography



Robotics

### Home of the Notre Dame Bull Dawgs:

- Football (combined with St. Mary's Colts)
- Volleyball
- Basketball
- Golf
- Badminton
- Track and Field

### OUTDOOR FITNESS CENTRE UNDER ARMOUR PARTNERSHIP



Community Service





Principal  
Vice Principal

Mr. Mike Weisgerber  
Mrs. Shannon English

mike.weisgerber@mhcbe.ab.ca  
shannon.english@mhcbe.ab.ca

# St. Mary's School

St. Mary's School is dedicated to the fullest development of the spiritual, intellectual, social, emotional and physical dimensions of each student.

## GRADES 7-9 PROGRAMMING

French Immersion • Regular Program • Fine Arts Academy • Learning Assistance Program

155 11 Street SW Medicine Hat, AB T2A 4S2  
tel: (403) 527-7616 • fax: (403) 527-7212

- St. Mary's School Medicine Hat
- St. Mary's Colts Sports
- St. Mary's School Fine Arts Parent Association
- @StMarys\_MH
- @StMarysColts
- @StMarys\_MH

ENGLISH & FRENCH IMMERSION

• All district attendance zones (with exception of South Ridge, Saamis Heights, Vista Heights and Hamptons)  
All division attendance zones for the Fine Arts Academy and French Immersion.  
Bell times 8:54 a.m. • 3:18 p.m.  
Flex Zone - Desert Blume

## HOME OF THE ST. MARY'S COLTS

- Football
- Basketball
- Volleyball
- Cheer
- Track & Field
- Badminton
- Cross Country
- Golf



Trip to Quebec



**BELIEF:** Students exposed to an environment rich in the Fine Arts have a tremendous opportunity to grow academically, socially and spiritually.



Community Service



Welcome to Canada!

St. Mary's School provides an engaging learning environment to more than 350 students.

### Offering:

- Strong Academic & Sports Programs
- Industrial Arts, Home Economics
- Knowledge & Employability Program
- French Immersion
- Fine Arts Academies in Dance, Art, Band, Choral, Drama



Halloween



# Mother Teresa School

*Journeying to Holiness by  
Loving, Giving, Helping & Serving.*

**EARLY LEARNING PROGRAM  
GRADES K - 6**

235 Cameron Road SE Medicine Hat, AB T1B 2Z2  
tel: (403) 529-2000 • fax: (403) 529-2178

**Before & After  
School Program  
Available**

**Principal** Mrs. Erika Bodnaruk [erika.bodnaruk@mhcbe.ab.ca](mailto:erika.bodnaruk@mhcbe.ab.ca)  
**Vice Principal** Ms. Aura Street [aura.street@mhcbe.ab.ca](mailto:aura.street@mhcbe.ab.ca)

- Mother Teresa School
- Mother Teresa School Early Learning Program
- @MotherTeresaMH
- @MotherTeresaMH



## Daily Breakfast Program!

Daily BREAKFAST is served, available to all students.  
**Nutritious kid-friendly meals** that align with AB Nutrition Guidelines for Children & Youth. The province-wide School Nutrition Program is funded by AB Education.

At Mother Teresa School, Christ is our model for everything we do. We permeate our faith into each of the subjects we teach. Kindness, empathy, caring and respect modeled by Christ are very important to the education of our students. At Mother Teresa School we teach students about our faith and Jesus' love for us.

**• All students in Marlborough, Connaught, Crestwood, Norwood, Meadowlands, Southview & Ross Glen  
Bell times 8:50 a.m. • 3:20 p.m.**

**Mother Teresa School - A Caring Catholic Community Challenging & Inspiring Each Other to Reach Our Full Potential.**

### RTI – Response to Intervention (RTI) Literacy and Numeracy Programming

**Response to Intervention (RTI)** is a multi-tier approach to identifying student need early and then supporting those student through differentiated instruction. Teachers and Learning Assistants will provide struggling learners with Literacy and Numeracy intervention at increasing levels of intensity to accelerate their rate of learning.

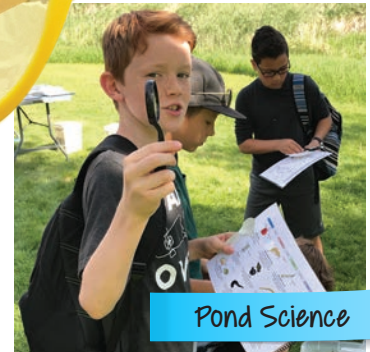
**Nutrition Program,** Milk Program, Hot Lunch and Snack program and the Brown Bag Lunch Program (sponsored by the MH Food Bank).

**Active School Council!** We encourage all parents to get involved in their child's education by volunteering at the school.

**Mother Teresa School is an inclusive school,** inspiring all children to engage in their learning, be ethical citizens, and promote entrepreneurship.

### Extracurricular Activities

Choir, Student Council, Leadership Theme Days, Science Fair, Intramurals, Talent Show, Track and Field, Mission Projects, Skating, Swimming, Safety Patrol, School Wide Concerts, Movie Nights, Brave Bystander Program.



Pond Science



Friends



**Before & After School Program Available**

# St. Francis Xavier School

At St. Francis Xavier School we are committed to teaching, modeling and promoting Gospel values in all areas of a balanced academic curriculum so that the teachings of Christ become our focus and Christ Himself, our constant point of reference.

## EARLY LEARNING PROGRAM GRADES K - 6

318 8 Street NE Medicine Hat, AB T1A 5R6  
tel: (403) 527-7223 • fax: (403) 527-7285

St. Francis Xavier School  
@StFrancisMH

Principal **Mr. Nick Gale** [nick.gale@mhcbe.ab.ca](mailto:nick.gale@mhcbe.ab.ca)

**Our Mission statement at St. Francis Xavier School** – *“To provide a strong Catholic education that will serve as the foundation of life-long learning that allows each child to succeed as an individual spiritually, intellectually, physically, socially, artistically, and emotionally.”*

We believe in life long learning that allows each child to succeed.

### Daily Lunch Program!

Daily LUNCH is served, available to all students. **Nutritious kid-friendly meals** that align with AB Nutrition Guidelines for Children & Youth. The province-wide School Nutrition Program is funded by AB Education.

- All students in Crescent Heights East of Division Avenue.
  - All students in Parkview, Ranchlands and Northlands
  - Flex Zone Area: Students can attend either St. Francis Xavier School or St. Michael's School with transportation provided.
- Bell times 8:55 a.m. • 3:23 p.m.

**Great School-Based Programs & Extra-Curricular Activities**...Response to Intervention (RTI), Levelled Literacy Program (LLI), Balanced Literacy Program, Universal Testing using Fountas & Pinnell, Collaborative Planning Circles (CPC), (E.T. Friday), Be Fit for Life/Physical Literacy, Rosary during the Marian Month of May, Face2Face Retreat, Community Classroom at Medalta for Gr. 3-6, Science Fair, Track & Field, Christmas Concert, Grade 6 Retreat in Cypress Hills, Swimming/Skating, Bell/Vocal Choir, Student Council, Spirit Days, Talent Show, Service Projects, School Safety Patrol, Milk Program, Healthy Snack Program, Before & After School Care, Science in Motion, Gr. 4-5 Trip to Calgary Science Centre/Heritage Park, Staff use SIVA (Supporting Individuals through Valued Attachments) training with students, "Safe & Caring" Series with Community Coming Together (CCT), Google Docs, Green Team and more!



Bible Presentation



Pottery



Centres



Kindergarten

We believe in providing a strong Catholic education inspired by Christ's teachings.



Grade 6 Retreat



Skating





After School Program Available

# St. Louis School

"Through a safe and caring Catholic environment where children are accepted, affirmed, and understood, we will empower our students to express themselves fully."

**EARLY LEARNING PROGRAM  
GRADES K - 6**

861 4th Street SE Medicine Hat, AB T1A 0L5  
tel: (403) 527-7411 • fax: (403) 527-7437

St. Louis School  
@StLouis\_MH

Principal Dr. Trisha Sotropa trisha.sotropa@mhcbe.ab.ca



## Daily Lunch Program!

Daily LUNCH is served, available to all students. **Nutritious kid-friendly meals** that align with AB Nutrition Guidelines for Children & Youth. The province-wide School Nutrition Program is funded by AB Education.

• All students in the North and South Flats, SE & SW Hill, Harlow, River Heights, Kensington, Tower Estates and Cottonwood & Wild Rose Trailer Court area. All students living in area East of Medicine Hat who are North of Hwy #41A and South of the Saskatchewan River.  
Bell times 8:35 a.m. • 3:10 p.m.

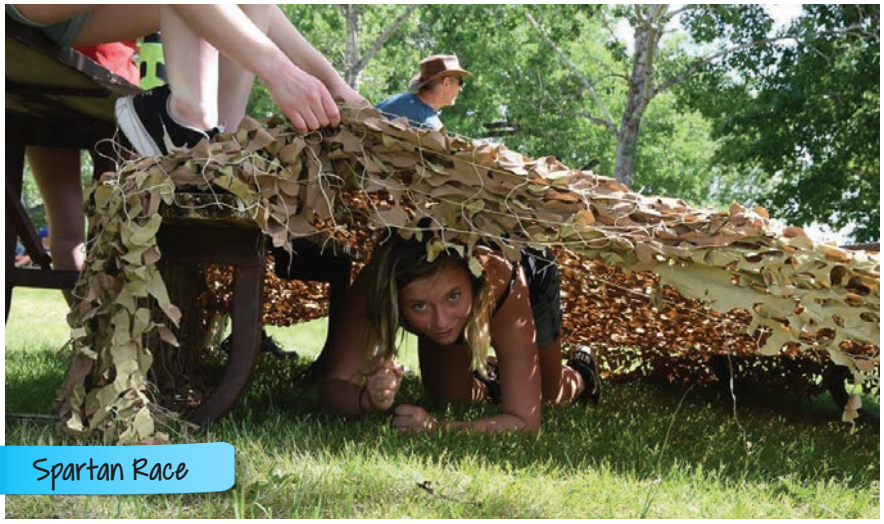
# WE LOVE OUR SCHOOL!

## Here's why:

- Focus on literacy and numeracy with a strong faith foundation
- Service projects involving our Saints' Groups (teaching children to help others in need)
- Breakfast Program, Milk Program, Free Monthly Hot lunch (Thank you to our generous sponsors – Kinsmen, Kiwanis, Foodland IGA, Sobeys, CARO)
- A New Lunch Program!
- Our beautiful top floor library
- Annual Spartan Race to build team spirit!
- Movie Nights, School Dances, Activity Days and more organized by our student leaders and fantastic Parent Council
- Excellent Music program – including our new guitar program!
- "Get Active" Program – students participate in skating, wall climbing, soccer, pickleball, archery, canoeing, etc. with our partnership with the YMCA
- North Flats Neighborhood Association Childworks (free after school program)



Archery



Spartan Race



SAINT MICHAEL'S  
ELEMENTARY SCHOOL

Before & After  
School Program  
Available

# St. Michael's School

St. Michael's School provides an education based on the teaching of Christ, that is both a preparation for life and a way of life.

**EARLY LEARNING PROGRAM  
Learning Assistance Program**

**GRADES K - 6**

865 Black Boulevard NW  
Medicine Hat, AB. T1A 7B5

tel: (403) 527-7242 • fax: (403) 527-9651

St. Michael's School

St. Michael's School Early Learning Program

@StMichaels\_MH

Principal

Mr. Ron Blackmer

ron.blackmer@mhcbe.ab.ca



## Daily Lunch Program!

Daily LUNCH is served, available to all students.

**Nutritious kid-friendly meals** that align with AB Nutrition Guidelines for Children & Youth. The province-wide School Nutrition Program is funded by AB Education.

**FINE ARTS  
FOCUS**



Leprechaun Traps



Off to Camp!

- **Natural Attendance Area:** All students in Crescent Heights West of Division Avenue. All students in Riverside. All students in Redcliff and area west of Medicine Hat and north of the Saskatchewan River.
- **Flex Zone Area:** All students in Crescent Heights east of Division Avenue North, Parkview, Ranchlands and Northlands can attend either St. Michael's School or St. Francis Xavier School with transportation provided.

Bell times 8:38 a.m. • 3:08 p.m.



Concert

## LOVE · TRUST · RESPECT · DIGNITY FOR ALL

At St. Michael's we greatly value parent participation and welcome parents and guardians into our school throughout the year. We believe effective communication with parents is necessary for a successful educational experience at school. St. Michael's School has an active School Council and Fund Raising Society (St. Michael's Society for the Fine Arts).

## EDUCATIONAL EXTRAS AT ST. MICHAEL'S SCHOOL

- Rosary Club
- Milk Program
- AMA Safety Patrollers
- Intramurals
- Blacklight Theatre Program
- Fine Arts Options
- Running Club - Noon Hour
- Before and After School Program
- Mary's Meals Supporter
- AM & PM Kindergarten & Early Learning

"St. Michael's School is proud to offer an educational focus in learning through the fine arts! Our school community values the joy of expressing our faith through music, drama and the visual arts. Various teachers on staff offer their expertise in fine arts subject areas. Each year we showcase our love for the arts during Fine Arts Week in May alongside our annual Fine Arts Gala!



Skating



World Down Syndrome Day



Before & After School Program Available

# St. Patrick's School

EARLY LEARNING PROGRAM  
GRADES K-5

241 Stratton Way SE Medicine Hat, AB. T1B 3Z2  
tel: (403) 527-1177 • fax: (403) 527-0985

- St. Patrick's School
- St. Patrick's School Early Learning Program
- @StPatricksMH

Principal Mr. Dwayne Unreiner [dwayne.unreiner@mhcbe.ab.ca](mailto:dwayne.unreiner@mhcbe.ab.ca)  
 Vice Principal Mrs. Leah Van Ham [leah.vanham@mhcbe.ab.ca](mailto:leah.vanham@mhcbe.ab.ca)

## What Makes our School So Great?

- Strong academic and faith-filled community
- Accelerated Reading and SuccessMaker programming to enhance learning, building Literacy and numeracy
- Enhanced Fine Arts programming including guitar classes, hand chimes and other instruments
- Strong parent involvement
- Positive and respectful environment which cares for all students
- Family Fun Activities, Dances, Board Game Tournaments
- Promoting Faith and Wellness through Community Classrooms
- Daily Physical Literacy

• Natural Attendance Area:  
 All students in South Ridge, Saamis Heights,  
 Hamptons and Desert Blume  
 Bell times 8:55 a.m. • 3:20 p.m.

Special recognition is given to students who model our Catholic character theme in our weekly Achiever's Club.



Construction!



Construction!



Floor Hockey



Hats off to Mental Health





**ENGLISH  
& FRENCH  
IMMERSION**

**École St. John Paul II School**

Dual-track English/French Immersion  
Elementary School  
Early Learning Program (AM and PM) offering  
Diverse Language Experience

**ENGLISH: K-6**  
**FRENCH IMMERSION: K-6**

@StJohnPaul2MH  
 @StJohnPaul2MH

Principal: Mr. Robert Dumanowski  
Vice-Principal: Mr. Terry Kennedy

robert.dumanowski@mhcbce.ab.ca  
terry.kennedy@mhcbce.ab.ca

# Welcome and Bienvenue!

## Save the Date

**École St. John Paul II School  
GRAND OPENING  
Monday, October 22, 2018**

1:00-2:00 p.m. Grand Opening Ceremony  
2:00-2:30 p.m. Cake & Ribbon Cutting  
2:30-6:00 p.m. Open House & School Tours

École St. John Paul II School is Medicine Hat Catholic Board of Education's newest and only dual-track elementary school! A state of the art educational facility designed for collaborative learning. Connecting classrooms, large stage, lots of natural light, chapel, large gymnasium, stage, common areas, large play fields with baseball diamonds & a skating rink. We offer dual-track English and French Immersion programming from Kindergarten to Grade 6. We also offer an Early Learning Program that introduces students to a diverse language experience. We are proud to provide quality academic programming that is firmly rooted in our Gospel values.

**Attendance Area English: East of 13th Avenue-South of Trans Canada, north of the city boundary including Southlands, Dunmore and Rural 2**  
**Attendance Area French Immersion: All District Attendance Zones**  
**Bell times: 8:25 am and 2:40 pm**



Friendship - L'amitié

## We are proud to offer our students:

- A "Maker Space" that will introduce students to robotics, computer coding, stop motion animation, green screen editing, news broadcasting, 3D printing and more
- Intramural sports
- Running Club
- Rosary Club
- Christmas Concert
- Grade 6 Camp McCoy Retreat in Elkwater
- Tennis lessons
- Skating lessons
- Service projects in the community
- Access to community classrooms
- Field trips that support classroom learning



Science in Motion



Skating Lessons  
Leçons de patinage



Pond Science  
Science des étangs



**DID YOU KNOW?**  
Our 21 school busses travel 1812 km per month!

**BACK TO SCHOOL TRANSPORTATION**  
School bus routes, pick-up & drop off times & locations at [www.southland.ca/medicinehat/](http://www.southland.ca/medicinehat/)  
SOUTHLAND TRANSPORTATION 403.526.4655  
CATHOLIC SCHOOL BOARD OFFICE 403.502.8351

# Transportation, School Boundaries & Bell Times

## SCHOOLS AND ATTENDANCE ZONES

### Monsignor McCoy High School

202 – 8th Street NE T1A 5R6  
• **Grades 10 - 12**  
(403)527-8161 phone / (403) 527-8209 fax  
**Principal – Mr. Paul Bauche**  
**Vice-Principal – Mr. Pat Weisgerber**  
**Vice-Principal – Mr. Rob Burzinski**  
• Natural Attendance Area:  
All District Attendance Zones.

**Bell Times 8:10 am / 2:40 pm**

### Mother Teresa School

235 Cameron Road SE T1B 2Z2  
• **Early Learning Program**  
• **K - Grade 6**  
(403)529-2000 phone / (403)529-2178 fax  
**Principal – Mrs. Erika Bodnaruk**  
**Vice-Principal – Ms. Aura Street**  
**Mother Teresa School Natural Attendance Area:** All students in Marlborough, Connaught, Crestwood, Norwood, Meadowlands, Southview and Ross Glen.

**Bell Times 8:50 am / 3:20 pm**

### St. Francis Xavier School

318 – 8th Street NE T1A 5R6  
• **Early Learning Program**  
• **K - Grade 6**  
(403)527-7223 phone / (403) 527-7285 fax  
**Principal – Mr. Nick Gale**  
• **Natural Attendance Area:** All students in Crescent Heights East of Division Avenue North, Parkview, Ranchlands and Northlands.  
• **Flex Zone Area:** All students in Crescent Heights East of Division Avenue North, Parkview, Ranchlands and Northlands can attend either St. Francis Xavier School or St. Michael's School with transportation provided.

**Bell Times 8:55 am / 3:23 pm**

### St. Mary's School

155 – 11th Street SW T1A 4S2  
• **Grades 7 - 9 Regular Program & (Fine Arts Academy)**  
• **Grade 7 – 9 French Immersion**  
(403)527-7616 phone / (403)527-7212 fax  
**Principal – Mr. Mike Weisgerber**  
**Vice-Principal – Mrs. Shannon English**  
• Natural Attendance Area: All Division Attendance Zones (with the exception of Southridge, Saamis Heights, Vista Heights and Hamptons).  
• All District Attendance Zones for Fine Arts Academy.  
• All District Attendance Zones for French Immersion.

**Bell Times 8:54 am / 3:18 pm**

### St. Michael's School

865 Black Blvd. NW T1A 7B5  
• **Early Learning Program**  
• **K - Grade 6**  
(403)527-7242 phone / (403)527-9651 fax  
**Principal – Mr. Ron Blackmer**  
• **Natural Attendance Area:** All students in Crescent Heights West of Division Avenue. All Students in Riverside. All students in Redcliff and area west of Medicine Hat and north of the Saskatchewan River.  
• **Flex Zone Area:** All students in Crescent Heights East of Division Avenue North, Parkview, Ranchlands and Northlands can attend either St. Michael's School or St. Francis Xavier School with transportation provided.

**Bell Times 8:38 am / 3:08 pm**

### St. Patrick's School

241 Stratton Way SE T1B 3Z2  
• **Early Learning Program**  
• **K - Grade 5**  
(403)527-1177 phone / (403)527-0985 fax  
**Principal – Mr. Dwayne Unreiner**  
**Vice-Principal – Mrs. Leah Van Ham**  
**St. Patrick's School Natural Attendance Area:** All students in South Ridge, Saamis Heights, Vista Heights, Hamptons and Desert Blume and Canyon Creek.

**Bell Times 8:55 am / 3:20 pm**

### Notre Dame Academy

646 Spruce Way SE T1B 4L4  
• **Grades 6 – 9 Regular Program & (Sports Academy)**  
(403)527-5118 phone / (403)527-6649 fax  
**Principal – Mr. Neal Siedlecki**  
**Vice-Principal – Mr. Lon Bosch**  
• Natural Attendance Area: All students in South Ridge, Saamis Heights, Vista Heights and Hamptons.  
• All District Attendance Zones for Sports Academy.  
• **Notre Dame: Flex Zone Area:** All students living in Desert Blume may attend either, St. Mary's (Grade 7-9) or Notre Dame (Grade 6-9) with transportation provided.

**Bell Times 8:15 am / 2:46 pm**

### St. Louis School

861 – 4th Street SE T1A 0L5  
• **Early Learning Program**  
• **K - Grade 6**  
(403)527-7411 phone / (403)527-7437 fax  
**Principal – Dr. Trisha Sotropa**  
• **Natural Attendance Area:** All students in the North and South Flats, SE & SW Hill, Harlow, River Heights, Kensington, Tower Estates and Cottonwood & Wild Rose Trailer Court area. All students living in area East of Medicine Hat who are North of Hwy#41A and South of the Saskatchewan River.

**Bell Times 8:35 am / 3:10 pm**

## DISTRICT-WIDE TRANSPORTATION IS PROVIDED FOR ELIGIBLE STUDENTS.

### Eligibility & Boundaries

- Elementary students who live 1.2 kms or more from their designated school
- Middle & High School students who live 2.4 kms or more from their designated school
- Transportation for students with special needs please call Learning Services @ 403.502.8365
- **Redcliff** students will be transported to St. Michael's School, St. Mary's School and Monsignor McCoy High School
- **Desert Blume** students will be transported to St. Patrick's, Notre Dame Academy, St. Mary's School and Monsignor McCoy High School
- **Dunmore** students will be transported to École St. John Paul II School, St. Mary's and Monsignor McCoy High School
- **District-Wide Transportation** will be provided to eligible students to;
  - French Immersion at École St. John Paul II School and French Immersion at St. Mary's School
  - Sports Academy at Notre Dame and Fine Arts Academy at St. Mary's School
  - Monsignor McCoy High School

### École St. John Paul II School

4802 Southlands Drive SE T1B 0N8  
• **Early Learning Program**  
• **K - Grade 6 English & French Immersion**  
(403)527-7333 phone / (403)TBA fax  
**Principal – Mr. Robert Dumanowski**  
**Vice Principal - Mr. Terry Kennedy**  
**Natural Attendance Area:** All students in areas East of 13th Avenue and Southlands. All students in Dunmore. All students East of Medicine Hat South of Hwy #41A. All students in area West of Medicine Hat South of Hwy #1. All students South of South Boundary Road.  
**All District Attendance Zones:** French Immersion

**Bell Times 8:25 am / 2:40 pm**

# Meeting the needs of students



## Learning Services

To provide a continuum of support for the mental health and well-being of parents, students and staff in a welcoming, caring, respectful and safe learning environment.

(Board Strategic Priority #5)

Medicine Hat Catholic Schools support all students with universal strategies and supports:

- Anticipating and valuing diversity
- Welcoming and caring learning environments
- Promoting positive mental health
- Differentiated instruction
- Assessment for learning
- Access to learning technologies
- Supports for positive behaviour



### Social-Emotional Learning

Each Catholic School has a dedicated space to help students develop social-emotional skills, including self-regulation.

Social-emotional learning is the process of developing students' knowledge, attitudes and skills to manage emotions, build healthy relationships, set goals and make decisions.



### Individualized Support Plans (ISP)

An ISP is a tool developed to focus a child's learning. To increase understanding of individual students' learning needs and strengths. To enhance communication between teachers, parents and students. To build students the skills and knowledge in order to be effective self-advocates and participants in their own learning. To help create a long-term plan that can help families with transitions and future planning.

### Collaborative Practices

Schools are most effective in addressing the needs of all children, youth and their families when school authorities, staff members, parents and community partners work collaboratively. Collaborative Planning Circles (CPC) in our elementary schools encourage schools, school authorities and their partners work together to provide supports and services in a way that is timely, culturally sensitive and responsive.

### "Looking For Light" Blog

Our Learning Services blog is available to share experiences and to learn and inspire one another around inclusive educational practices, professional learning and innovative teaching.

<http://mhcbelarningservices.wordpress.com>





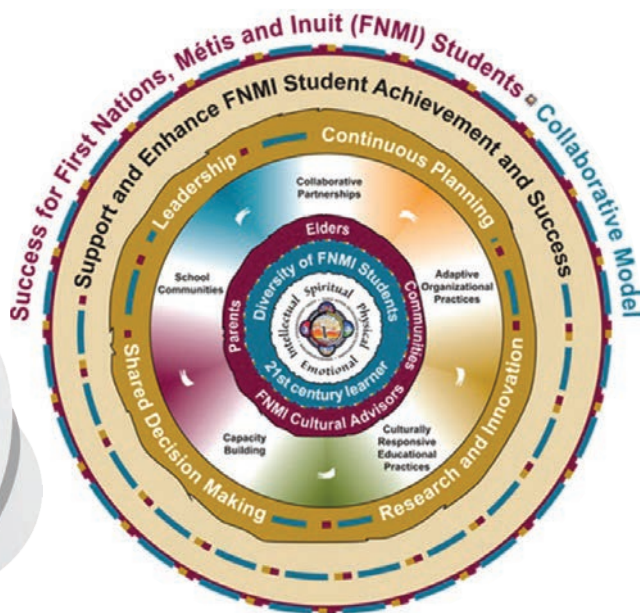
## Early Learning Program (ELP)

We are committed to establishing quality inclusive early learning settings requiring thoughtful programming and support in the most natural pre-school environment for all young children, including those who experience at-risk factors, along with a seamless transition into Kindergarten and Grade 1.



### DID YOU KNOW?

Each of our Catholic Elementary Schools offer an Early Learning Program for children ages 3 - 5?



## First Nations Metis and Inuit (FNMI)

Through our FNMI Lead Teacher we work with the FNMI community leaders and partners to develop culturally relevant programs, resources and student supports

Our goal is to ensure all students are knowledgeable, understanding and respectful of the rich diversity of First Nations, Métis and Inuit cultures, languages and histories; the importance of Treaties; and the legacy of residential schools.

We strive to build an education system that honours Indigenous history, cultures, languages and perspectives.

## Mental Health Capacity Building Initiative Community Coming Together (CCT)

CCT brings mental health promotion and prevention to our students, staff, and community. Wellness Facilitators provide universal programming through presentations, information sessions, and community wide events. Together we begin to help students and families to identify various ways to manage stress and build resiliency along with mental health awareness.



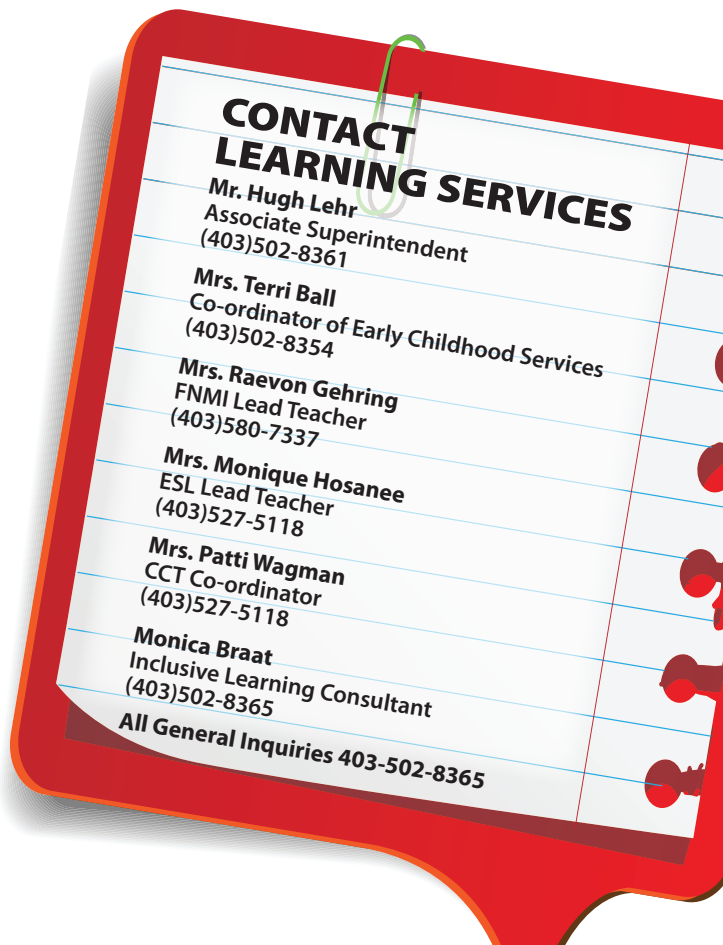
[www.communitycomingtogether.weebly.com](http://www.communitycomingtogether.weebly.com)

## English Language Learners (ESL)

The goal for our English Language Learners is to be immersed in an English language rich environment supported by their teachers and peers. Our ESL Lead teachers provide assessment and instructional support to ensure the students' progress on the ESL benchmarks from Alberta Education as a measure for language proficiency. These benchmarks then allow for the learning team to plan for instruction. ESL programming is funded for both Canadian-born and foreign born students.

## Response to Intervention (RTI)

Response to intervention (RTI) is a way of providing evidence-based supports to students. A response to intervention approach is built on the premise that when universal supports are provided consistently for all students, the majority of students will thrive. The underlying goal of RTI is preventing academic struggles and challenging behaviours, so that all students are successful.



### CONTACT LEARNING SERVICES

**Mr. Hugh Lehr**  
Associate Superintendent  
(403)502-8361

**Mrs. Terri Ball**  
Co-ordinator of Early Childhood Services  
(403)502-8354

**Mrs. Raevon Gehring**  
FNMI Lead Teacher  
(403)580-7337

**Mrs. Monique Hosanee**  
ESL Lead Teacher  
(403)527-5118

**Mrs. Patti Wagman**  
CCT Co-ordinator  
(403)527-5118

**Monica Braat**  
Inclusive Learning Consultant  
(403)502-8365

**All General Inquiries 403-502-8365**

# Kindergarten & Early Learning

## Welcome/Bienvenue Little Ones!



### EARLY LEARNING PROGRAM LOCATIONS & TIMES

**Ecole St. John Paul II School**  
Early Learning Program  
8:30 - 11:16  
11:45 - 2:40  
(403) 527-7333

**St. Francis Xavier School**  
Early Learning Program  
12:35 - 3:20  
(403) 527-7223

**St. Michael's School**  
Early Learning Program  
8:45 - 11:30  
12:15 - 3:00  
(403) 527-7242

**St. Louis School**  
Early Learning Program  
8:45 - 11:25  
12:25 - 3:10  
(403) 527-7411

**Mother Teresa School**  
Early Learning Program  
9:00 - 11:45  
12:35 - 3:20  
(403) 529-2000



**St. Patrick's School**  
Early Learning Program  
8:55 - 11:40  
12:35 - 3:20  
(403) 527-1177

**First day for Early Learning is September 7, 2018**  
**ELP ORIENTATION DAYS ARE September 4, 5 & 6**  
**Come Learn with Us!**

### Age Eligibility

Children ages 3-5 (as of September 1st).

Programming for children with special needs starts at age 2 years and 8 months (as of September 1st).

### Registration

Children can enter an Early Learning Program at any time of year! Register at any one of our elementary schools. Registration forms also available online at [www.mhcbe.ab.ca](http://www.mhcbe.ab.ca) under

#### Parents Tab.

Birth Certificate must be presented at time of registration.

### KINDERGARTEN

Each of our elementary schools offer Kindergarten including morning & afternoon options.

**Kindergarten Orientation Days are September 4, 5 & 6, 2018**  
**First day for Kindergarten is September 7, 2018.**

Please contact your school for complete registration information.

#### KINDERGARTEN LOCATIONS & TIMES

**Mother Teresa School**  8:45 - 11:45 a.m.  
235 Cameron Rd. S.E., Ross Glen  
403.529.2000 12:35 - 3:20 p.m.

**St. Francis Xavier School**  8:55 - 11:45 a.m.  
318 8 St. N.E. (Crescent Heights)  
403.527.7223

**St. Michael's School**  8:43 - 11:40 a.m.  
865 Black Blvd. N.W. (Crescent Heights)  
403.527.7242 12:10 - 3:10 p.m.

**St. Patrick's School**  8:55 - 12 noon  
241 Stratton Way S.E. (Southridge)  
403.527.1177 12:35 - 3:20 p.m.

**St. Louis School**  8:45 - 11:30 a.m.  
861 4 St. S.E. (Flats)  
403.527.7411 Mon., Wed., Thurs., Fri.  
8:45 - 12:00 noon Tuesday  
12:25 - 3:10 p.m.

**Ecole John Paul II School**  8:30 - 11:16 a.m.  
**FRENCH IMMERSION**  
4802 Southlands Drive S.E.  
403.527.7333 11:54 a.m. - 2:40 p.m.

**Did you Know...** A child can attend a **combination of 1/2 Day Kindergarten and 1/2 Day Early Learning Program** in a school day.

Please contact Mrs. Terri Ball, Co-ordinator of Early Childhood Services at [403.502.8354](tel:403.502.8354) for information about programming. General Inquiries about Early Learning Services, please call [403.502.8365](tel:403.502.8365).

### Age Eligibility

A child who turns 5 years of age on or before March 1, 2019 can start kindergarten in the Fall of 2018. Kindergarten is an optional program.

A child who turns 6 years of age on or before March 1, 2019 can start Grade One in the Fall of 2018.

### ENGLISH & FRENCH IMMERSION

#### Give your child the best start

Seamless entry from Early Learning to Kindergarten

**EARLY LEARNING** (for pre-school aged children) - Each of our elementary schools offer Early Learning Programs including morning & afternoon options. Our programs are faith-based supportive environments that are safe and secure settings for children to develop independence, initiative, creativity, early literacy and to develop socially.







# Catholic Schools are Special!



## MH Catholic Schools' Education Foundation Introduction

For 21 years, the Medicine Hat Catholic Schools' Education Foundation has been a loyal partner and supporter of Catholic schools

### Scholarships available for students:

- Archie MacPhail Memorial Scholarship
- Education Foundation Servant Leadership Scholarship
- James Michael (Mickey) Lynch Memorial Scholarship
- Joe Stroh Memorial Scholarship
- Mook Giesinger Scholarship
- Pat Cullen Memorial Scholarship
- Sister Joan Burns Memorial Scholarship
- Stan Gill Memorial Scholarship
- Tom Anderson Memorial Scholarship
- Winter Games Legacy Scholarship



Medicine Hat Catholic Schools' Education Foundation

Support Catholic Schools by donating to the Medicine Hat Catholic Schools' Education Foundation. Please call (403) 502-8351 or visit the Foundation @ [www.mhcbe.ab.ca](http://www.mhcbe.ab.ca) (Education Foundation tab) for more information and to discuss options for involvement. *Thank you to our gracious donors!*

### Thank You MH Catholic Schools' Education Foundation for sponsoring ...

- École St. Thomas d'Aquin Grade 6 Retreat at Camp McCoy in Elkwater. Lots of team building & group activities including reflecting on their faith journey.
- St. Mary's School's Musical, Madagascar Jr. was a huge success! Students had the opportunity to participate as Actors, Singers & Dancers and Stage Production.



## Annual Fundraising Golf Tournament

The Education Foundation hosts a fundraising golf tournament early in June each year and invites businesses and community residents to participate. The funds raised at this event are used to support staff and students in the Division through presenting scholarships and awarding grants to enhance Catholic Christian leadership initiatives and unfunded school projects.



**Next Foundation Golf Tournament June 14, 2019.**  
**SAVE THE DATE!**

## Grants Awarded 2017 - 2018:

- École St. Thomas d'Aquin - Grade 6 Retreat at Camp McCoy - \$346
- Monsignor McCoy High School & Notre Dame Academy - WE Day - \$1,843
- St. Mary's School - Canadian Student Leadership Conference - \$2,340
- St. Mary's School - Madagascar Jr. Musical - \$1,000
- St. Patrick's School - Faith & Wellness Day - \$300
- Brown Bag Lunch Delivery Program - \$2,793
- SPICE Conference - \$3,547
- McCoy High School Rocky Mtn. Music Festival - \$500

# #We've Gone SOCIAL!



**Medicine Hat Catholic Board of Education**  
June 22 at 4:04 PM · 🌐

"Put your hand down onto he floor. You're sitting on a very famous floor. Think about the grandmas grandpas ... lawyers, dentists , mom's, dad's that all sat on this floor."  
Today students alumni, staff and parents gathered at École St. Thomas d'Aquin Medicine Hat to hear stories about their school and say farewell to the 58-year-old building.




👍 Like    💬 Comment    ➦ Share

👍 57    Most Relevant ▾

7 Shares

Write a comment...

**DanJoanne Friedt** We had great years at St.Thomas under George Kambeltz's leadership in the late 80's- early 90's. Good memories!  
Like · Reply · 2w

**Helen Snortland** So wish I knew...wonderful memories! xoxo  
Like · Reply · 2w Edited

↩ 2 Replies

View 17 more comments

**Medicine Hat Catholic Board of Education** shared an event.    🌐  
March 23 · 🌐

In just three days Medicine Hat's three biggest high school bands will join forces on the Esplanade Arts & Heritage Centre stage!  
Order your tickets here: <https://goo.gl/9uwHdb>  
#medhat #mhcatholic

*2018 Tri-School Band Concert*  
Monday March 26, 7PM



**mhcatholic**  
Medicine Hat, Alberta

mhcatholic Yesterday our Catholic School Community took time to honour and lift up in prayer those affected by last week's tragedy. We stand with you. #Humboldt #HumboldtStrong customimagegear Amazing group of children. ❤️



49 likes  
APR 13

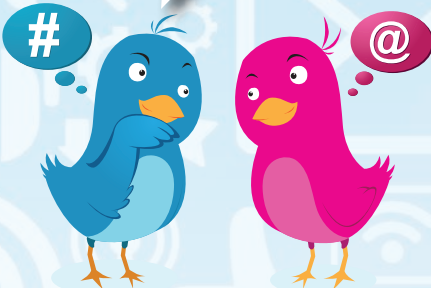
Add a comment...



CHECK OUT OUR  
YOUTUBE CHANNEL  
Medicine Hat Catholic  
Board of Education



Like, share &  
enjoy posts from  
your favourite  
schools!



**f** Medicine Hat Catholic Board of Education  
**t** @MHCatholic  
**i** @MHCatholic



**f** Monsignor McCoy High School  
**t** @MMcCoy\_MH



**f** St. Mary's School  
**t** @StMarys\_MH  
**i** @StMarys\_MH



**f** St. Patrick's School  
**f** St. Patrick's School Early Learning Program  
**t** @StPatricksMH



**f** Notre Dame Academy  
**t** @NotreDame\_MH



**f** Mother Teresa School  
**f** Mother Teresa School Early Learning Program  
**t** @MotherTeresaMH  
**i** @MotherTeresaMH



**f** St. Francis Xavier School  
**t** @StFrancisMH



**f** St. Michael's School  
**f** St. Michael's School Early Learning Program  
**t** @StMichaels\_MH



**f** St. Louis School  
**t** @StLouis\_MH



**f** St. John Paul II School  
**t** @StJohnPaulII MH

# Calendar at a Glance

MEDICINE HAT CATHOLIC BOARD OF EDUCATION  
SCHOOL YEAR CALENDAR - MEDICINE HAT

# 2018-2019

*It all starts here!*

S	M	T	W	T	F	S
<b>AUGUST</b>						
12	13	14	15	16	17	18
19	20	21	22	23	24	25
26	27	28	29	30	31F	
3	SCHOOL PD DAY - TEACHERS ONLY					
0	INSTRUCTIONAL					
3	TOTAL					
F	FAITH FORMATION					
29th	FIRST DAY FOR TEACHERS					

S	M	T	W	T	F	S
<b>SEPTEMBER</b>						
						1
2	3	4s	5	6	7	8
9	10	11	12	13	14	15
16	17	18	19	20	21	22
23	24	25	26	27	28	29
30						
S	FIRST DAY FOR STUDENTS					
1	P.D.					
18	INSTRUCTIONAL					
19	TOTAL					

S	M	T	W	T	F	S
<b>OCTOBER</b>						
	1	2	3	4	5	6
7	8	9	10	11	12	13
14	15	16	17	18	19	20
21	22	23	24	25	26	27
28	29	30				
1	P.D.					
21	INSTRUCTIONAL					
22	TOTAL					

S	M	T	W	T	F	S
<b>NOVEMBER</b>						
				1	2	3
4	5	6	7	8	9	10
11	12	13	14	15	16	17
18	19	20	21	22	23	24
25	26	27	28	29	30	
1	P.D.					
21	INSTRUCTIONAL					
22	TOTAL					

S	M	T	W	T	F	S
<b>DECEMBER</b>						
						1
2	3	4	5	6	7	8
9	10	11	12	13	14	15
16	17	18	19	20L	21	22
23	24	25	26	27	28	29
30	31					
L	LAST FULL DAY FOR STUDENTS					
1	P.D.					
14	INSTRUCTIONAL					
15	TOTAL					

S	M	T	W	T	F	S
<b>JANUARY</b>						
		1	2	3	4	5
6	7	8	9	10	11	12
13	14	15	16	17	18	19
20	21	22	23	24	25	26
27	28	29	30	31		
19	INSTRUCTIONAL HS					
1	P.D. E/M ELEMENTARY & MIDDLE SCHOOL					
18	JAN. INSTRUCTIONAL - ELEM/MIDDLE					
19	TOTAL					

S	M	T	W	T	F	S
<b>FEBRUARY</b>						
					15	2
3	4	5	6	7	8	9
10	11	12	13	14	15	16
17	18	19	20	21	22	23
24	25	26	27	28		
2	P.D. - TEACHERS' CONVENTION					
2*	TIME IN LIEU: PARENT TEACHER CONFERENCE					
15	INSTRUCTIONAL					
19	TOTAL					
S	FIRST DAY OF 2ND SEMESTER					

S	M	T	W	T	F	S
<b>MARCH</b>						
				1	2	
3	4	5	6	7	8	9
10	11	12	13	14	15	16
17	18	19	20	21	22	23
24	25	26	27	28	29	30
31						
1	P.D.					
20	INSTRUCTIONAL					
21	TOTAL					

S	M	T	W	T	F	S
<b>APRIL</b>						
	1	2	3	4	5	6
7	8	9	10	11	12	13
14	15	16	17	18	19	20
21	22	23	24	25	26	27
28	29	30				
0	P.D.					
16	INSTRUCTIONAL					
16	TOTAL					

S	M	T	W	T	F	S
<b>MAY</b>						
			1	2	3	4
5	6	7	8	9	10	11
12	13	14	15	16	17	18
19	20	21	22	23	24	25
26	27	28	29	30	31	
1	P.D.					
21	INSTRUCTIONAL					
22	TOTAL					

S	M	T	W	T	F	S
<b>JUNE</b>						
						1
2	3	4	5	6	7	8
9	10	11	12	13	14	15
16	17	18	19	20	21	22
23	24	25	26	27L	28*	29
30						
1	P.D. E/M ELEMENTARY & MIDDLE SCHOOL					
1*	CLOSING DAY					
18	INSTRUCTIONAL ELEMENTARY/MIDDLE					
19	INSTRUCTIONAL HIGH SCHOOL					
20	TOTAL					
L	LAST DAY - STUDENTS					
*	LAST DAY - TEACHERS					

SEMESTER	1	2	TOTAL
<b>INSTRUCTIONAL DAYS</b>			
ELEMENTARY/MIDDLE	91	91	182
HIGH SCHOOL	93	91	184
<b>NON-INSTRUCTIONAL DAYS</b>			
PD/SCHOOL CLOSING DAYS: ELEM/MIDDLE SCHOOLS	8	6	14
PD/SCHOOL CLOSING DAYS: MSGR. MCCOY	7	5	12
PARENT TEACHER CONFERENCES	0	2	2
<b>TOTAL</b>			198

Catholic Education is different.

Consider it for your child.

Catholic education is education of the whole person, to nourish each person as a child of God. The staff and students of Medicine Hat Catholic strive always to reflect the teachings of the Gospel in our words and actions.

## OUR SCHOOLS

### High School

Monsignor McCoy High School

### Middle Schools

St. Mary's School

Notre Dame Academy

### Elementary Schools

St. Francis Xavier School

St. Michael's School

St. Louis School

École St. John Paul II School

St. Patrick's School

Mother Teresa School

www.mhcbce.ab.ca  
**REGISTER NOW!**  
**403.527.2292**



@mhatholic